

# Community Spirit

Available free online with news from West River, Hopetoun, Jerdacuttup, Munglinup, and Lake King and Ravensthorpe

## Community Photo stories in the Fitzgerald Biosphere

Upon looking at the story of the Fitzgerald Biosphere, you begin with the criteria which stipulates a UNESCO Biosphere Reserve must look at reconciling sustainable development alongside conservation of biodiversity and logistic support (things like research, monitoring and education). UNESCO states this is to be done over 3 zones:

1. The core area - a strictly protected zone that contributes to the conservation of landscapes, ecosystems, species and genetic variation. This sits within our Fitzgerald River National Park .
2. The Buffer zone - surrounds or adjoins the core area and is used for activities compatible with sound ecological practices that can reinforce scientific research, monitoring, training and education.
3. The Transition area - where communities foster socio-culturally and ecologically sustainable economic and human activities.

The UNESCO MAB programme and network is a fantastic concept - connecting people and nature in hundreds of places around the world. Our cultures and languages are diverse and different - yet we share a common purpose and vision. And we have one story that we can all tell - Biosphere reserves can 'inspire a positive future by connecting people and nature today'.

Consumer brands are exceptional at building relationships. They are in our homes and in our lives. We not only understand clearly what they do for us, but why they fulfil a need. Brands also have a consistency in how they tell their story. Their communications aim to create conversations, to engage rather than simply broadcast their messages.

Taking inspiration from Astrid Volske (Ourphotostories), the Fitzgerald Biosphere Community Collective (FBCC) and the Bremer Bay CRC brought together a day where we could combine these concepts to a group of photographically minded people at Tozer's Bush Camp.



■ Astrid from Ourphotostories sharing her skills with us.



■ Dr Alison Lullfitz sharing her story about growing up and working in the Fitzgerald Biosphere.

■ Continued page 3

# HOPETOUN FOR SALE – WHICH ONE IS YOUR NEXT DREAM?

RayWhite



**165 Banksia Road** from \$430,000  
**\*4 Bed \*2 Bath \*1.21ha (2.99acres)**

Discover the perfect blend of modern living and tranquil surroundings in this spacious family haven, nestled in the heart of Krystal Park. This home exudes an unmistakable Australiana charm, thanks to its wide verandahs that wrap around the front and side, as well as a cozy back patio - the perfect spots for savoring your morning coffee as the sun rises or enjoying evening drinks while you soak in breathtaking sunsets. You'll relish views of pristine natural bushland, and take in views across the Barren Ranges in the Fitzgerald National Park from the front of the home.



**14 Cambewarra Drive** \$330,000  
**\*3 Bed \*1 Bath & Sheds! \*2.28ha (5.6acres)**

Comfortable three bedroom house and 5.6 acres of land with a selection of sheds!  
If you want room to move, a family home and loads of shed space look no further.  
Approximately 3 km from town and the coast is this tidy home, with good sized bedrooms, kitchen and wooden flooring.  
The large living area enjoys a wood fire plus air con unit so you'll be comfy year round. Front and back decked verandas mean you can follow the sun throughout the day.

**RayWhite**  
Rural South Coast WA  
Hopetoun

## WE ARE hiring!

Open positions:

- Cleaners
- Yardsperson / Maintenance

Fulltime or Partime | Flexible hours available

Enquiries to:  
[scwa.reception@raywhite.com](mailto:scwa.reception@raywhite.com)  
9838 3100

Join our team!



**21 France St** \$425,000  
**\*4 Bed \*2 Bath \*720sqm**

This remarkable 4-bedroom, 2-bathroom house is now available for sale. Boasting a modern design and a prime location, this property is perfect for families or those looking for a spacious and comfortable living space. Top this off with views across to the Fitzgerald National Park and Barren Ranges from the front porch. There is an open-plan living area, complete with beautiful floorboards that add a touch of class to the space. The outdoor space with patio and fenced back yard, is perfect for entertaining friends and family.

**Call Wendy Howell with your sales enquiries 0438 470 779**  
**RAY WHITE RURAL (SOUTH COAST WA)**

25 Veal Street Hopetoun  
[raywhiteruralsouthcoastwa.com.au](http://raywhiteruralsouthcoastwa.com.au)  
Ph: 08 9838 3100 • Residential Sales 0438 470 779 • Rentals 08 9838 3100 • Rural Sales 0429 299 797





# Community Photo stories in the Fitzgerald Biosphere

■ From page 1

Astrid, a former photojournalist, showed us how you can create meaningful storytelling, guiding us through things like capturing real emotion, using good lighting and downloading various apps to help along the way.

She treated us to some of her archived projects, most of which are stories of people in rural areas who become characters in their own script, on their own stage, often in their ute, workplace or home with their livestock, flowers or dogs - akin to Robert Tozer himself!

Tozer's Bush Camp - a 700 acre property that was borne out of contemplation around farming during tough times and providing for a family - demonstrates a relatively low impact sustainable business, in a bush setting that conserves biodiversity within the transition zone of the Fitzgerald Biosphere.

What's more - academics can and have accessed his property for research and his records for data such as fire history, whilst paying tourists can affordably stay and learn about the local flora via a botanist led tour. Tozer, albeit unknowingly, is nailing the Biosphere brief.

Alongside this workshop we were able to capitalise on Astrid's time and detour to some of our friends around

the Jerramungup shire to see what makes the Fitzgerald Biosphere special to them - stay tuned to see more of our Biosphere photo stories in weeks to come!

This event was made possible by funding from Lotterywest and the Shire of Jerramungup.

— Annie Leitch  
Communications and Events for the  
Fitzgerald Biosphere Community Collective (FBCC)



■ Tozer with his dog.



■ Troy Treeby at family property discussing his experience growing up in the Fitzgerald Biosphere.

*This week's*  
**SPECIALS**

Serving suggestion

*Linley Valley*  
**PORK BELLY PORTION**  
**\$15** kg

Hot PRICE!

buy WEST! eat BEST!

Australian Kingston Crown Beef Roast .....	\$10.00kg
Lilydale Free Range Whole Chicken .....	\$7.50kg
Australian Beef Rump Steak.....	\$27.00kg
Australian Bananas 750g pack .....	\$3.99ea
Australian Pineapples.....	\$5.49ea
Australian Rubi Gold Apples .....	\$5.49kg
West Australian Iceberg Lettuce .....	\$1.99ea
Arnott's Chocolate Tim Tam Biscuits 165-200g select varieties .....	\$2.25ea
Zooper Dooper Ice Tubes 24 pack select varieties.....	\$3.50ea
V8 Power Blend 1.25 litre select varieties .....	\$3.00ea
Dairy Farmers Thick & Creamy Yoghurt 140-150g select varieties.....	\$1.30ea
Palmolive Body Wash 500ml select varieties.....	\$3.25ea
Morning Fresh Dishwashing Liquid 900ml select varieties.....	\$4.75ea

On sale Wednesday October 11th -  
Tuesday October 17th, 2023



*Hopetoun* **IGA**

30 Veal Street Hopetoun • 9838 3919

# Contacts

### Ambulance:

Emergency ..... 000  
Non-Emergency ..... 13 12 13

### Hospitals:

Ravensthorpe ..... 9838 2211  
Esperance ..... 9079 8000  
Albany ..... 9892 2222

### Doctors Surgery:

Hopetoun ..... 9838 3854  
Ravensthorpe ..... 9838 1600

### Dentist:

Ravensthorpe ..... 9838 1322

### Esperance Hospital

Public Dental Clinic..... 9079 8000

### Community Nurse/Child Health:

Ravensthorpe ..... 9838 2211

### Extended Care Nurse:

Hopetoun ..... 9838 3323

### Home and Community Care

Office ..... 9838 3144  
Mobile ..... 0429 889 675

### Community Vehicle Service

Coordinator ..... 0439 335 147

### Hospital Auxiliary:

Second Tuesday of the month 1.30pm in the Red Room  
Contact Judy Harp

### Allied Health:

Services such as Physio, Dietician, Occupational Therapy and Speech Pathology are available. Contact Ravensthorpe or Esperance Hospital to find out more about these services.

### Mental Health:

There is a Mental Health service available currently. Please contact Ravensthorpe Hospital to find out more about this service.

## Shire of Ravensthorpe Councillor Contact Details

Shire Council Offices..... 9839 0000

Keith Dunlop—Shire President.....

Phone: 9838 330; Mobile: 0428 383 302  
Email: Keith.dunlop@ravensthorpe.wa.gov.au

Sue Leighton—Deputy Shire President..... Phone: 0407 981 301

Email: sue.leighton@ravensthorpe.wa.gov.au

Tom Major..... Mobile: 0403 782 887

Email: Tom.major@ravensthorpe.wa.gov.au

Mark Mudie..... 0428 356 064

Email: mark.mudie@ravensthorpe.wa.gov.au

Graham Richardson..... Phone: 9838 3880; Mobile: 0474 492 810

Email: Graham.richardson@ravensthorpe.wa.gov.au

Cr Julia Bell..... Mobile: 0427 381 092

Email: julia.bell@ravensthorpe.wa.gov.au

Cr Rachel Livingston..... Mobile: 0429 634 596

Email: rachel.livingston@ravensthorpe.wa.gov.au

## Word of the Day

**berserk** adjective | ber-SERK

### Definition:

Berserk generally means “markedly out of control due to intense anger or excitement.” It is often used in the phrase go berserk, which can mean either “to become very excited” or “to become very angry and often violent.”

### Did You Know?

Combine a bear with a shirt and what do you get? A cuddly, honey-loving, ursine pal, perhaps. Combine the words bear and shirt however, at least in Old Norse, and you get something quite different. Our English word berserk comes from the Old Norse noun berserkr, which is likely a combination of ber- (“bear”) and serkr (“shirt”). According to Norse legend, berserkers were not ones to say “Oh bother” when faced with sticky situations—they were warriors who wore bearskin coverings and worked themselves into such frenzies during combat that they became immune to the effects of steel and fire. Berserk was borrowed into English (first as a noun referring to such a warrior) in the 19th century, when interest in Scandinavian myth and history was high. It was considered a slang term at first, but it has since gained broader use.



**NEXT ISSUE DEADLINE:**

5pm, Monday October 23, 2023

### ALL ENQUIRIES:

contributions@cospirit.net  
Kylie Thomas, Co-ordinator, 0408 840 447  
Or Attn: Contributions, PO Box 135, Ravensthorpe 6346.

Or Hopetoun and Ravensthorpe Community Resource Centres will accept written articles. Include name, address and phone details in all correspondence.

### ARTICLES AND PHOTOS

Articles to be sent in Word format.  
Photos to be sent in JPEG format.  
Photos minimum size 500mb.  
Maximum of two photos per email.  
Photos of children require parental permission.

### GENERAL ADVERTISING AND CLASSIFIEDS

Content to be sent in Word, PDF or JPEG formats.  
Classified proofs on request only.

### ACCOUNTS AND SUBSCRIPTIONS

Email financeadmin@cospirit.net  
Phone enquiries Sandi Hunter,  
0417 950 615.

### MANAGEMENT COMMITTEE

Email secretary@cospirit.net or  
PO Box 135, Ravensthorpe 6346  
GRIEVANCES—contact secretary by email secretary@cospirit.net



# CWA active over winter

The Hopetoun CWA has been pretty active over the Winter months.

Nine Ladies attended the Munglinup Spring Luncheon and had a great day. Thank you Munglinup Members.

We also treated ourselves to a Christmas in July Luncheon held at the Wavecrest Tavern. That was our Leisure activities but we have been very busy with Catering. Catering one day at the Wildflower Show for the soup and scones—thankyou to our non members for helping make soup, Shirley, serve the food, Carole, and our two washers up Tim and Ted. Without your help we would have been up the creek so to speak.

We have also Catered for luncheons for two tourist buses with 11 and 23 visitors. Also our Saturday Devonshire Morning teas are still so popular with locals and visitors.

Our September meeting was held with nine Members present. Roz Biddulph gave a report on the Hopetoun Clay Target Weekend. Our trophy for Ladies High Gun was won by Julie Santostefano, the visiting



■ Wildflower Catering Tim, Carole, Roz, Wendy, Madeline Carole and Trix.

WA President of Clay Target Association.

Wendy Zani gave a report on our Catering. We were given high praise for our gluten free dietary needs Thank you to Margaret Pike for the scones—the visitors took those that were left on the bus for their afternoon tea.

We hope to order our tea towels through an Esperance business.

It was moved that we give book prizes for end of year functions to Hopetoun,

Ravensthorpe, Munglinup and Jerdacuttup schools.

The flower winner was Madeline Bell and the Raffle was won by Roz. We then enjoyed a delicious afternoon tea prepared by

Lyn Craig, Wendy and Trix.

Our next meeting will be held on November 13th with Hostesses Viv Herbert and Coralie Thomas, raffle Viv.

—Pam Cousins



■ Visitors.



■ Clay Target Julie Liam and Charlie.

## HOPETOUN MARINE RESCUE ANNUAL GENERAL MEETING

Sunday November 19th 2023

5.00 – 5.30pm

Emergency Services Building Meeting Room.  
All welcome - a BBQ will follow the meeting.

For catering, please contact the Secretary:  
Phone or text - 0484 184 925  
Email - hvmr604@gmail.com



# LJ Hooker

## FOR SALE 31 RAGLAN STREET, HOPETOUN



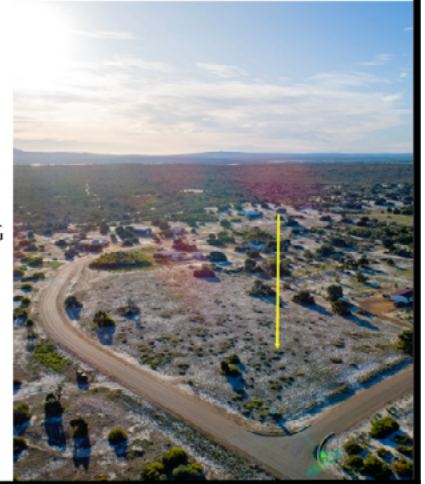
 3  1  1

**\$379,000**  
THREE GENEROUSLY SIZED BEDROOMS, A STYLISH BATHROOM, AND A SEMI-ENCLOSED VERANDA FOR YEAR-ROUND ENTERTAINMENT COMPLETE THIS PACKAGE. FIND A SPACIOUS BACKYARD WITH RAISED GARDEN BEDS AND TWO SHEDS - ONE READY FOR YOUR DREAM WORKSHOP!

## FOR SALE 247 BANKSIA ROAD, HOPETOUN

 2.5 ACRES

**\$109,000**  
STUNNING 2.5 ACRE BLOCK IN THE BREATHTAKING KRystal PARK DEVELOPMENT. WITH AWE-INSPIRING MOUNTAIN VIEWS, POWER, TELSTRA, NBN, AND SCHEME WATER READILY AVAILABLE, CREATING YOUR DREAM HOME HAS NEVER BEEN EASIER! RUN, DON'T WALK!



## FOR LEASE 31 TAMAR STREET, HOPETOUN

**\$700P/W**

SET IN HOPETOUN'S INDUSTRIAL AREA ON A SIZABLE 6059SQM, WITH 3 SHEDS & A CARETAKER'S QUARTERS OR OFFICE SPACE!



EXCITING OPPORTUNITY! SECURE A THRIVING BUSINESS AND FREEHOLD IN THE HEART OF RAVENSTHORPE WITH EXPANSION POTENTIAL!

**\$575,000 - \$625,000**

## FOR SALE 81 MORGANS STREET, RAVENSTHORPE

## FOR SALE 19 WEST BANK CLOSE, HOPETOUN



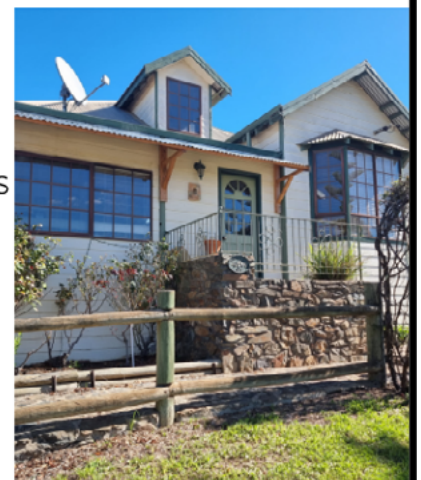
 3  2  2

**FROM \$550,000**  
THIS STUNNING PROPERTY BOASTS A SPACIOUS LOUNGE WITH WOOD-LOOK VINYL FLOORING, HIGH RAKED CEILINGS, AND A COSY POT BELLY FIREPLACE. ENJOY THE BREATHTAKING BUSHLAND, FIRE PIT, AND A SPACIOUS SHED FOR DIY PROJECTS.

## FOR SALE 4 ANDRE ST, RAVENSTHORPE

 3  1  1

**\$450,000**  
RARE CHANCE TO OWN A CHARMING 1905 COTTAGE IN RAVENSTHORPE! THIS VALUABLE PIECE OF THE TOWN'S HERITAGE OFFERS SPACIOUS ROOMS, A DREAMY KITCHEN, A DELIGHTFUL ATTIC RETREAT, A MODERN BATHROOM, AND A PICTURESQUE OUTDOOR SPACE.



**ROB MILOSESKI**

**CALL NOW**

**0408 030 888**



# Mama Stitch: Whiskey & Boots weaves a tapestry of maternal stories"

In the cosy confines of 'The Red Room' at Ravensthorpe Community Centre, a truly unique and touching experience awaits. Whiskey & Boots, the Perth-based performance company, is all set to transport audiences on a profound journey through the maternal lineage with their latest production, "Mama Stitch." This performance, scheduled for October 13th, 14th, and 20th, is more than just a show; it's an intimate exploration of the vibrant community of Ravensthorpe & surrounds through the lens of deeply personal and heartfelt stories about mothers.

Whiskey & Boots is renowned for its distinctive art form known as Headphone Verbatim Performance. In "Mama Stitch," actors wear headphones and deliver recorded interviews exactly as they hear them, live and unembellished. This raw and unfiltered approach creates a powerful connection between the storytellers and the audience, immersing everyone in the authentic and often deeply emotional narratives of maternal love, sacrifice, and resilience.

What sets "Mama Stitch" apart is its use of music to enhance the storytelling experience. Each story is beautifully underscored with an original, tailor-made musical response inspired by the shared narratives. The harmonious blend of spoken word and music adds a layer of depth and emotion to the performance, making it a truly immersive and unforgettable experience.

As audiences arrive at 'The Red Room,' they are greeted with a cup of tea and freshly baked bread accompanied by homemade jam. This comforting welcome sets the tone for an evening of reflections and shared stories from the communities of Hopetoun and Ravensthorpe. It's a way for attendees to connect with their fellow community members and feel a part of something larger than themselves.

"Dear Mum" letters, written by real people from the many communities who've hosted Mama Stitch, grace the performance space, becoming a snapshot of the multifaceted and diverse maternal relationships we share.

"Mama Stitch" is not just a performance; it's a living, evolving project that adapts uniquely to each location it travels to. It's a celebration of mothers in all their diverse forms within a community. Whiskey & Boots invites you to embark on this remarkable journey where art seamlessly intertwines with the essence of humanity.

The creative minds behind "Mama Stitch" are the talented individuals of Whiskey & Boots:



**Georgia King:** A versatile artist and educator, Georgia has been a pivotal member of Whiskey & Boots, contributing significantly to their acclaimed productions. Her work is marked by passion and dedication to storytelling.

**Mark Storen:** A dynamic artist involved in various creative endeavours; Mark is a founding member of Whiskey & Boots. His contributions to the arts have garnered acclaim both nationally and internationally.

**Holly Garvey:** A versatile artist, actor, musician, and photographer, Holly's creativity knows no bounds. Her multifaceted talents enrich the "Mama Stitch" experience.

**Luke Dux:** A celebrated guitarist and songwriter, Luke brings his musical prowess to "Mama Stitch," creating a unique and captivating, blues-infused atmosphere.

**Here are quotes from some of our community participants - can you guess who they are?**

"She used to make 'Mummy Specials', and it had superpowers, it could cure anything. We didn't know what went in it, there was some secret ingredient. And it wasn't until many years later that I found out, she told me it's just Eggnog... Made with love." - Community Manager

"Even when I went to boarding school she still was crying. Like wouldn't you be happy, I'm the last one, you're free now. But Nah." - Adult Siblings

"She hugs us, and she says, "I love you too", and I say, "I love you more." And then it keeps goin up and up and up until infinity."

"Yeah, just keep being the best mum you are." - Brother & Sister, School Children

"I don't know what I'd say if she suddenly appeared and she was here again, other than "Hi Mum, let's go for coffee and cake!" - "Retiree" Nature Advocate, Artists, Mother, Wife, Chief Cook and Bottle Washer

"Mama Stitch" is not just a show; it's an emotional journey through the heart and soul of Ravensthorpe's community. Whiskey & Boots, with their Headphone Verbatim Performance and musical accompaniment, invite you to share in the profound stories of mothers and connect with your own experiences. Join them on October 13th, 14th, and 20th at 'The Red Room,' and let the tapestry woven by "Mama Stitch" touch your heart.

Head to [www.raveaboutarts.com](http://www.raveaboutarts.com) to get your tickets.

# The journey to become a yoga teacher



Yoga is not all about strange exercises and poses. It's a journey to tame the 'monkey mind' and allow the physical body to explore its limits. Through this process, one can achieve relaxation, flexibility, and balance, opening a path to becoming a better version of oneself.

Yoga is defined by Yoga Australia as "An ancient system that offers wisdom, techniques and practices to support physical, mental and spiritual wellbeing."

For Adam Smallridge, a volunteer Yoga Teacher at Ravensthorpe CRC, yoga proved transformative. "I initially turned to yoga for its physical benefits. Struggling to tie my shoelaces due to a bad back from years of playing football, surfing, and other sports," he recalls. However, within weeks, Adam experienced profound shifts, both physically and spiritually. "Once I began practicing the 8 limbs of Yoga, which are a set of guiding principles for life, I started living in greater harmony, especially in being true to myself."

Describing his experience, Adam says, "Now I practice yoga daily, be it for 10 minutes or an hour. Not only does my body feel better than ever, but yoga has also reshaped how I perceive the world, bringing calm to my once chaotic mind."

Adam emphasises that yoga has something for everyone. "Whether it's Asana Yoga with its focus on poses, Pranayama rooted in breath control, Kundalini Yoga aiming to awaken the inner life force, or other forms centred around life's guiding principles or meditative stillness, there's a practice suited for everyone!"

The most important part of yoga is that its multifaceted approaches aspire to guide individuals toward a harmonious existence and a richer understanding of themselves, their surroundings, and their place within the cosmos.

### The first step

"The journey of a thousand miles begins with one step," the wise old proverb by Lao Tzu reminds us. For Samantha Hewinson, founder and director of Live to Serve Academy and the upcoming Yoga Teacher Training Program instructor at Ravy CRC, this first step was crucial to her new life!

"For me taking the first step into Yoga was a life transformative experience, I probably wouldn't be here, as happy and fulfilled as I am without this practice", she recalls.

Samantha explained that she felt trapped in what many would consider a perfect life. "I had a lucrative job and a

■ Continued page 9

## PUBLIC NOTICE

### DRAFT AMENDMENT TO DOGS LOCAL LAW 2010

The Shire of Ravensthorpe is pleased to announce that the draft amendment to the Shire of Ravensthorpe Dog Local Law 2010 is now available for public viewing.

#### Reason for amendment:

The purpose of this draft amendment is to enhance and modernise the existing Dog Local Law 2010 in response to changing community needs and evolving industry standards.

The amendment aims to address issues related to responsible pet ownership, safety, and the welfare of both dogs and the community.

#### Key areas addressed in the draft amendment include:

- Clarification of dog registration and identification requirements
- Updated regulations for dog exercise areas and prohibited zones
- Improved guidelines for the management of aggressive or dangerous dogs
- Revised penalties to ensure compliance with current standards

The Shire of Ravensthorpe values the input of its community members and encourages all interested parties to review the draft amendment.

#### How to access the draft amendment:

The draft amendment is available for viewing online [here](#).

You can also view the draft in person at each Shire of Ravensthorpe office in Hopetoun and Ravensthorpe from Monday-Friday from 9am-4pm.

This legislation shall come into effect 14 days following its publication in the Government Gazette.





# The journey to become a yoga teacher

■ From page 8

bustling social life. I partied wildly, embarked on extravagant adventures, and travelled to various countries, indulging in all the pleasures the world had to offer." However, a growing inner void began to overshadow everything, and nothing seemed to make her feel truly alive.

"I was trying to keep going, but both my mind and body were paying a steep price. It was a tumultuous journey, marked by frequent visits to mental health programs seeking stability. Physically, I was deteriorating; my menstrual cycle had stopped, leading to a diagnosis of infertility. I felt profoundly disconnected from myself," she described.

During her rehabilitation, yoga became her saviour. "It was a period of introspection, seeking my life's purpose," she says. "Yoga helped me in the most crucial moment!" Samantha described. "The yoga community became my anchor, offering compassion, love and support. I never felt alone, I was welcomed and nourished." In just 18 months, Sami's world took a positive turn.



Now a mother of four and a fervent yoga ambassador in Queensland Samantha affirms, "Yoga resonates in every facet of my life. I urge everyone to take that transformative first step."

A U.S. national survey reported that 86% of people practicing yoga experienced a strong sense of mental clarity, 90% improved their overall health and fitness, and 86% reported having reduced stress.

There are many reasons to practice yoga: to improve your balance and flexibility, enhance your breathing, gain control over your mind, meet new friends and, of course, to have fun!

**There is always a space for**

**you!**

Both instructors, Adam and Samantha, are united in their message: "Everyone is welcome in yoga. Irrespective of age, race, gender, beliefs, background, or physical condition, it's a path of self-discovery that enhances wellness and harmony in one's life."

Yoga is a process of self-discovery, a beautiful way that brings wellness and happiness in harmony to your life.

It's never too late to embrace learning and find fresh inspiration. Ravy CRC has a few spots remaining for its upcoming Yoga teacher training that begins in February 2024. Seize this opportunity to transform and share your passion with others! For more details on the Yoga Teacher Training Program at Ravensthorpe CRC, please reach out at

[hello@ravycrc.com.au](mailto:hello@ravycrc.com.au) or call 08 98381340.

**Why the Ravensthorpe CRC is doing this:**

One of Ravensthorpe CRC's primary objectives is to provide social development events, services and projects. The organisation, with sponsorship from the Ravensthorpe Hopetoun Future Fund, Shire of Ravensthorpe, and Allkem is offering free teacher training in disciplines like Yoga, Qi-Gong, and African Drumming. These newly trained teachers then will share their skills with the community as part of their commitment with the program.

Here are Samatha's final words of encouragement: "You have everything to gain and nothing to lose. Why not give it a shot?"

—Gaby Castro, Journalist

## Upgrade for Meals on Wheels

Did you know?

The Meals on Wheels for our community are prepared and delivered from the Mary Anne Haven Seniors Centre.

With the aid of grants from Horizon Power and the Ravensthorpe Hopetoun Future Fund, Hopetoun Senior Citizens & Assoc Inc are undertaking a major refurbishment of the kitchen facilities at the centre so that we can continue to provide this vital service to our community.

We will start work soon and when we do so, the Meals on Wheels will continue to be prepared and delivered as usual.

We have received funding from the Ravensthorpe Shire - Community Development Fund towards hiring a commercial kitchen for this purpose, so that this vital community service can continue uninterrupted.

—K Wilson

## Keevil's Furniture

homemakers

YOUR LOCALLY OWNED AND OPERATED  
FURNITURE AND BEDDING STORE

Located near the Boulevard Shopping Centre, Esperance

For all your Furniture, Bedding, Giftware  
and Homeware requirements.

[www.homemakersfurniture.com.au](http://www.homemakersfurniture.com.au)
Phone 08 9071 2585
[admin@keevilsfurniture.com.au](mailto:admin@keevilsfurniture.com.au)



**Alikem**  
**BIG DAY OUT**

**4 NOVEMBER 2023**

**1PM - 9PM**

**HOPETOUN EVERETT COUNTRY GOLF CLUB**

**INFLATABLE OBSTACLE COURSES & SLIDES - BOUNCY CASTLES  
- RIDES - GAMES - PRIZES - LIVE ENTERTAINMENT - FOOD  
TRUCKS - AND MUCH MORE!**

**BUS BETWEEN RAVENSTHORPE AND HOPETOUN**





# Ravy Community Gift Shop

## (Devil's Darning Needle)

The following is the second in this series of articles introducing some of the very talented people who live and create in our district. I am delighted to showcase samples of their work and to share it with the wider community.

In this issue Sue Riseborough introduces herself and I have included photos of some of her lovely items available in the shop.

### Sue Riseborough - Sue Linda Arts

As a long-time resident many will know me already. Growing up, Hopetoun was my family's holiday destination, then in 1990 I was lucky enough to make the move with my own family.

We've now called Hopetoun home for the past 33 years.

Throughout my life, art and design has always been a passion.

From sewing clothes to craftwork, painting in various forms and event design, I've always loved creating.

After finishing full-time work at RNO Nickel Mine and moving to part-time work at Wavecrest, I started to itch to paint again.

I attended a spontaneous resin workshop one day and discovered a spark for creating beautiful epoxy pieces! I now create ocean and surrounds inspired bespoke pieces for sale.

I feel blessed living near the ocean. Our beautiful beaches and National Park are my inspiration, with my focus being ocean vibes.

I enjoy multi-dimensional art and love combining my acrylic paintings with epoxy resin.

My art is available for sale via my Sue Linda Arts Facebook page and is also available at The Devil's Darning Needle, Community shop in Ravensthorpe and via the restaurant at Wavecrest Bar and Bistro in Hopetoun.



**The Ravensthorpe Community Centre**  
**ANNUAL GENERAL MEETING**  
will be held on Monday 16th October, 2023  
at 4:00pm in the Red Room  
*If you love this fabulous Community Facility or just want to check it out please come along.*



## SHIRE OF RAVENSTHORPE COMMUNITY UPDATE



### SPRINGDALE ROAD BRIDGE UPDATE

Construction on the new concrete bridge over the Jerdacuttup River commenced in June 2023 and Main Roads WA have advised that work to date has included the completion of both abutments, earthworks to lift the road to 80 per cent completion, and the commencement of the rock protection.

This section of Springdale Road will remain closed to the general public with a signed detour to remain in place. Please follow the signs. Only emergency service vehicles and personnel will be allowed to pass the site.

Restricted access will be granted to immediate locals in passenger vehicles only (**no heavy / oversized vehicles**), however they must advise site staff of the need to access.

In the coming months there will be significant movement and construction at the Jerdacuttup River bridge site.

#### **18- 20 October 2023:**

The bridge beams will arrive via a crane and the whole site will close to all vehicles due to the high risk movements.

Only emergency services vehicles displaying flashing lights and sirens will be permitted to pass.

#### **06 November 2023:**

Concrete pouring to the deck is scheduled for the week commencing 6 November 2023, this will also mean there is no access through the site.

#### **Early December 2023:**

Pavement construction, guardrail installation and seal is planned for early December 2023. Only restricted authorised personnel will have access through the site.

#### **Further information:**

Main Roads Great Southern

Ph: (08) 9892 0555

Email: [gsreg@mainroads.wa.gov.au](mailto:gsreg@mainroads.wa.gov.au)



## WHAT IS FIRE FUEL?

Firebreaks must be in place **on 31 October 2023 and then maintained until 30 April 2024.**

All residents/landowners/occupiers of land within the Shire of Ravensthorpe, including those with land within townsites, are required and have the shared responsibility to ensure that they comply with the Fire Control Notice and Firebreak Notice 2023/2024.

All land zoned within the town sites of Fitzgerald, Hopetoun, Jerdacuttup, Munglinup & Ravensthorpe that are 4,000m<sup>2</sup> or less, must reduce fire fuel.

Fire fuel is any combustible material, dead or alive, in isolation or clusters or aggregation with other combustible materials that, in the opinion of an authorised officer of the Shire of Ravensthorpe, is likely to fuel fire. Including but not limited to:

- Heavy leaf litter on the ground
- Dead leaves in gutters
- Fallen branches and any combustible vegetation in clusters including combustible materials suspended off the ground
- All grasses exceeding a height of 100mm
- Any tree within the area immediately surrounding a building, or branch of a tree that may fall onto a building which in the opinion of an authorised officer of the Shire of Ravensthorpe constitutes an unacceptable fire risk

Please read through the Fire Control Notice and Firebreak Notice 2023/2024 on the Shire website for more info:

[https://www.ravensthorpe.wa.gov.au/Profiles/ravensthorpe/Assets/ClientData/RA\\_Firebreak\\_notice\\_2023-2024.pdf](https://www.ravensthorpe.wa.gov.au/Profiles/ravensthorpe/Assets/ClientData/RA_Firebreak_notice_2023-2024.pdf)

**ventia**

**nbn**

### Get to know about Fibre coming to Ravensthorpe!

Come to our information session to learn how you can get more from your **nbn**® connection with Fibre coming to Ravensthorpe!

Learn more about:

- Who your Ventia and nbn Local representatives are.
- What notices and activities to expect.
- Afternoon Tea will be provided

Date: Wednesday 18 October 2023  
Time: 3pm – 6pm  
Venue: Ravensthorpe CRC, 65 Morgans Street

## LOCAL GOVERNMENT ELECTIONS

The next Ordinary election will be held on Saturday 21 October 2023, to fill four Council vacancies on four year terms.

Visit the shire website for candidate names and information:

<https://www.ravensthorpe.wa.gov.au/council/my-council/elections/current-candidates2023-ordinary-council-election.aspx>

Cr Keith Dunlop  
Shire President

**NEXT MEETING:**  
**Ordinary Council Meeting**  
**Tues 17 Oct 2023**  
**6pm**  
**Ravensthorpe Council**  
**Chambers**

[email\\_stakeholder.rcp@ventia.com](mailto:email_stakeholder.rcp@ventia.com)  
for more information and to book your spot.

# Highlights of RAIN's recent agricultural events

The Ravensthorpe Agricultural Initiative Network (RAIN) has been a beacon of agricultural knowledge and community engagement in the region. Despite the challenges of unpredictable weather, RAIN recently organized three successful events that brought together farmers, experts, and enthusiasts to share insights and experiences. Let's delve into the highlights of these events.

## 1. RAIN Spring Field Day:

On September 13th, RAIN hosted its much-anticipated Spring Field Day, drawing a crowd of 52 attendees, even in wet weather conditions. The event showcased a diverse range of topics, including South Coastal Agencies' canola and wheat trials. Sophie Daw and Henry Marsh shared valuable insights into these trials, shedding light on the latest developments in crop research.

SEPWA's variety trials for wheat, barley, and canola was also a focal point of the event. David Cook from SEPWA and Georgia Trainor from InterGrain provided attendees with in-depth knowledge about these trials and the various crop varieties being tested. Additionally, the field day covered a deep ripping site as part of the GRDC project. David Hall from DPIRD Esperance and a local farmer shared their expertise on deep ripping techniques and their practical implications.

The day concluded with a discussion on regenerative agriculture, which is a component of the State NRM project, "Digging Deeper: Land Management Impacts



on Soil Carbon." Attendees learned about companion cropping, intercropping, and summer cropping from Luke Caelli, who shared valuable insights based on his experience. The event wrapped up with a Sundowner at the Dunn Rock Tennis Club, fostering networking and camaraderie among participants.

## 2. Lakes Grower Group Winter Walk:

Approximately 20 attendees gathered for the Lakes Grower Group Winter Walk. The event featured various trials and demonstrations, including an Overwatch trial, NVT Canola site, SEPWA Barley trials, Optigly RR Canola, SEPWA Wheat trials, pasture spray trials, and a Tillage Radish demo. Attendees had the opportunity to gain hands-on experience and insights into these trials.





# Highlights of RAIN's recent agricultural events

■ From page 14

The event concluded with a Sundowner at a local tavern, providing a relaxed atmosphere for participants to share their learnings and experiences.

### 3. RAIN's Crop Walk to the Legume Trials:

On September 27th, RAIN organized another educational event as part of the Grower Group Alliance project funded by GRDC. This event aimed to "close the economic yield gap of Grain Legumes in WA." Approximately 10 people attended the event, which included visits to legume trials led by Mark Seymour, Erin Stevens from DPIRD Esperance, and Ben Biddulph, the chief scientist in DPIRD Perth.

During the event, experts highlighted the importance and advantages of legumes in agriculture, emphasizing their potential economic benefits. Attendees gained valuable insights into how legumes can play a



crucial role in enhancing agricultural sustainability.

In conclusion, RAIN's recent events have once again proven the organization's commitment

to agricultural education and community engagement.

These gatherings have brought together farmers, researchers, and experts to share knowledge, experiences,

and innovations. As RAIN continues to be a driving force in Ravensthorpe's agricultural landscape, the future looks promising for sustainable and thriving farming practices in the region.

## Managing Stress & Anxiety - an invaluable workshop

On Tuesday October 3rd, due to the generous support of Allkem and the Ravensthorpe Hopetoun Future Fund, the Ravensthorpe CRC were fortunate enough to have Linda Wilson from Elite Counseling deliver an outstanding 2-hour workshop on handling stress and anxiety.

Linda's expertise and guidance left participants equipped with valuable tools for stress management and resilience building.

Linda introduced a number of excellent techniques, including briefly touching on meditation.

On Tuesday November 14th, we're thrilled to have Linda back to dive deeper into this topic through our Understanding Meditation workshop.

This workshop will provide you with the opportunity to explore different meditation methods and learn about the benefits meditation practice can offer.

For more information:  
Website: [www.ravycrc.com.au](http://www.ravycrc.com.au)  
Phone: 9838 1340  
Email: [hello@ravycrc.com.au](mailto:hello@ravycrc.com.au)

**RAIN ANNUAL GENERAL MEETING:**  
Monday, October 23rd,  
2023, 05.30pm onwards.

**Libertyrural**  
DISTRIBUTOR  
**NEWDEGATE STOCK & TRADING**  
Ph: 9871 1556  
MOB: 0428 711 556  
24 hours fuel at Newdegate  
**FOR ALL ON FARM DELIVERIES OF FUEL**

**GEDC**

# Update

## GEDC Annual Report 2022-2023

Our Annual Report is an important tool used to communicate our key achievements and ensure accountability of the GEDC to Parliament and the community we serve. It highlights our operational achievements, financial performance and services delivered during the reporting period, outlining how we work to facilitate economic and social outcomes for the Goldfields-Esperance region and the State of Western Australia.

[View our 2022-2023 Annual Report here.](#)

## Goldfields-Esperance Major Projects Conference

Our region's role as an economic powerhouse was centre stage this week at the 2023 Goldfields-Esperance Major Projects Conference hosted in Perth, by Informa Connect. Key

takeaways about the region included:

- Massive growth of over 20% in total economic output in the past year
- Huge opportunities as the State moves towards decarbonisation and strong demand for the region's critical minerals
- Collaboration across industry and government stakeholders is key to realising potential in the region
- Regional Development Minister Don Punch MLA delivered a keynote speech for the Conference, with over 35 speakers addressing the audience over two days.

## National Housing and Homelessness Plan - Public Consultation

GEDC Deputy Chair, Tracey Rathbone and staff attended the Australian Government's National Housing and Homelessness

Plan Public Consultation session in Kalgoorlie-Boulder in September. The community forum brought together a range of stakeholders to explore housing and homelessness challenges specific to our region.

The Plan aims to set out key reforms needed to address housing and homelessness challenges and will provide a shared vision to inform future housing and homelessness policy in Australia. There are several ways to engage with the consultation process, including making a written submission or joining an online public webinar scheduled for October 30th, 2023.

[Register or find out more here.](#)

## New Fund to Support Childhood Education and Care Services

The State Government has announced a new \$4.1 million fund to support the viability of regional early childhood education and care (ECEC) services.

The Fund aims to assist regional services deliver innovative proposals for new models and initiatives to support the ECEC sector, with grants of up to \$1 million provided to implement projects that target individual regions,

multiple regions, parts of regions or even State-wide.

The EOI is open until 2.30pm, Friday, November 3rd, 2023.

For further information [visit our website here](#), or apply via [TendersWA](#).

## Consumer Protection Awards

Nominations for the 2024 Consumer Protection Awards are now open.

The Consumer Protection Awards provide an opportunity to recognise and reward the achievements of those who help communities understand and have better access to consumer protection in everyday situations. It celebrates the achievements of individuals and organisations that have contributed positively to consumer protection in WA. Nominations close October 30th, 2023. [Nominate here.](#)

## Invitation to Exhibit | Buy West Eat Best 'Meet the Buyer' trade show

Buy West Eat Best's 'Meet the Buyer' trade show returns this October as the biggest and most diverse showcase of WA Food and Beverage business in one central location.

Tuesday October 24th, 2023, 10am-3pm, Crown Perth

'Meet the Buyer' provides an opportunity for WA food and beverage businesses to exhibit alongside local producers to showcase products to a highly engaged, decision maker and influential audience base, attending with the intention of discovering new brands, new products to drive new business opportunities.

Discover the highlights [here](#), while exhibitor information and pricing [can be found here](#).



GEDC CEO Kris Starcevich joined Peter Bednall from Tjaltjraak Native Title Aboriginal Corporation and Chamber of Minerals and Energy Chief Economist Tim Marney for a panel session on creating investment and development opportunities.



# October is the month for outdoor adventure, locally and around WA

- Outdoors October runs throughout the month of October
- Discover events in your Shire and join the outdoor adventure on the Outdoors WA website
- The Cook Labor Government continues to enhance outdoor activities and attractions across WA

Outdoors October began on Sunday 1 October with a month-long celebration dedicated to promoting active outdoor recreation.

The Agricultural Region which ranges from Esperance in the south to Bremer Bay in the west, is known for its diverse fauna and flora so take advantage of the great weather and explore our outdoors.

The Cook Labor Government continues to invest in outdoor activities and attractions across WA, including upgrading the half basketball court in the Shire of Broomehill-Tambellup and resurfacing the tennis courts at the Bremer Bay Sports Club.

Outdoors October is proudly



led by Outdoors WA, which is supported by Cook Labor Government.

Now in its tenth year, the initiative promotes the health and wellbeing benefits of outdoor active recreation and is a key deliverable of the WA Outdoor framework, 'More People, More Active, Outdoors'.

Visit [www.outdoorswa.org.au](http://www.outdoorswa.org.au) for ideas and activities you can participate in.

"After a wet winter, now's the perfect time to get active outdoors and soak up the sunshine," said Agricultural

Region MLC Shelley Payne.

"Whether you're a keen hiker, paddling enthusiast, or simply looking for a friendly game at your local

park, there's an abundance of activities for all ages and ability levels to experience and try.

■ Media Release

**OPEN FOR BUSINESS AS USUAL**

**ALBANY** *Paul Armstrong Panel Beaters*  
**CITY TOWING SERVICES**  
**Paul Armstrong Proprietor** **24 Hr Towing**

Mobile 0418 936 010  
 Tel: 9842 2838  
 14 Prior Street Albany WA 6330  
[paularmstrong@smashrepairer.com](mailto:paularmstrong@smashrepairer.com)



**Albany Smash Repairs**

All Makes & Models  
 All Work Guaranteed  
**0418 936 010**  
**9842 2838**



[paularmstrong@smashrepairer.com](mailto:paularmstrong@smashrepairer.com)  
[www.smashrepairer.com](http://www.smashrepairer.com)



## DID YOU KNOW?

Venus is the only planet that spins clockwise. Every 225 Earth days, Venus travels around the sun, but Venus rotates clockwise once every 243 days.

People used to say "prunes" when taking pictures. In the 1840s, it was considered childish to smile for pictures so it became popular for people to say "prunes" instead of "cheese" in order to keep their mouths taut.

Nutmeg is a hallucinogen. Because it contains myristicin, a natural compound that has mind-altering effects, you can experience hallucinations if you ingest large quantities. Yikes!



# Community Noticeboard

**The Community Spirit is your community based newspaper, covering local news and events.**

**We are pleased to support local events**

**TERMS & CONDITIONS:**

- Design must be **completed by client** and submitted as a JPEG or PDF.
- Are to be for **FREE Local Community Events** only.
- To be placed on Notice Board at Community Spirit discretion.
- Notice Board is free providing there is to be a follow up article for the paper after the event. If no is article provided then the group will not be allowed this space again.
- There is limited area for the Notice Board so first in will get the space.

**For further information please contact the Community Spirit Communications Manager on 0408 840 447**

Looking for the **Community Transport Service Coordinator** number to book your next specialist appointment?  
**Call 0439 335 147**

## WOMEN'S HEALTH

# GP VISITS

**Ravensthorpe and Hopetoun  
July - December 2023**

## Dr Ellie Brusasco

Hopetoun: October 25 and 27  
December 13 and 15

Ravensthorpe: October 26  
December 14

Please book your appointment with Hopetoun receptionist on (08) 9838 3854 or Ravensthorpe receptionist on (08) 9838 1600

**APPOINTMENTS ARE FOR WOMENS HEALTH AND MENTAL HEALTH ISSUES.**

NB This service is funded by Rural Health West and the Department of Health.

**HOPETOUN PRIMARY SCHOOL P&C**

**PRESENTS.....**

# HOPEYS GOT TALENT

## 2023

# WE WANT YOU!

**THE TOWN'S MOST SUCCESSFUL TALENT SEARCH IS BACK!**

We are on the hunt for more mind-blowing, spectacular and suprising acts from across the shire and beyond.

HGT can catapult you to local stardum and the title is YOURS for the taking. No one is too old or too young to have thier shot.

Do you have a talent that needs to be seen?  
Then come show us what you've got!

# APPLY NOW!

PLEASE COMPLETE AN AUDITION FORM TO ENTER

Hopetoun Hall, 29th October  
1pm - 4pm



## Thai Cooking Class

**\$65  
PER PERSON**

THURSDAY 9TH NOVEMBER 6PM - 8PM  
HOPETOUN COMMUNITY CENTRE

COME ALONG AND ENJOY LEARNING HOW TO COOK 3 AUTHENTIC THAI DISHES:

- SALAD KAEG / GADO GADO
- CHICKEN PANANG CURRY
- COCONUT PANCAKES



Book Online  
[hopetounwa.com/events/thai3](http://hopetounwa.com/events/thai3)  
or call 9838 3062



*Sport News*

# Opening day for Bowls



■ Frank, Des, Darryl and Peter.

■ From page 24

Vs Scaddan at Esperance. Sue Lee's team winning against Trish Stone's team 22-19 and Coral Grant's team losing to Caroline William's team 14-23 Hopey 36 1pt. Scaddan 42 4pts.

Thank you to Coral Grant for selling the tickets in the weekend lotto to raise funds for the Ladies Classic to be held in January. October 7th winners 8 & 16; Mick Benn and Michelle Steven's.

Two Ladies teams travelled to play in the Kulin Classic. The Men's Fours Championships were played on Sunday 8th with three teams competing in a round robin event. Runner up were the team of Bub McGlenn, Danni Carter, Terry Lord and Brian Grant with one win +4. Winning both games +15 were Des Barr, Darryl Quinn, Peter Chrisp and Frank Green.

—Pam Cousins



## FORTHCOMING EVENTS:

October 14th—Pennants Men v Esperance White at Hopetoun, Ladies at Hopetoun v Condingup

October 15th—Social Bowls ,

October 18th & 25th—Ladies 9am; Mixed Scroungers 1pm

October 21st—Pennants Men v Esperance Gold at Scaddan

October 21-22nd—Ladies Championship Pairs

**Get Online Week**  
16 - 22 October 2023

**KAHOOT BINGO!**

Are you ready to take your online skills to the next level?

Join us for an afternoon of online bingo and have a blast learning new skills!

Monday 16th October  
1pm - 2:30pm  
Ravensthorpe CRC

**Come to our FREE event and learn a new digital skill**



■ Mary, Val and Bub.

Quiz courtesy of Businessballs.com



1. What is the name of the fringe on each corner of the Tallit, or shawl, worn by Jewish men for morning prayer?
2. William the Conqueror was Duke of which region of France from 1035 until his death?
3. Film actor Jeanne Claud van Dam is nicknamed The 'what' From Brussels?
4. Rarotonga is the most populous island of which group of islands?
5. Ed Harris has played which artist in a major motion picture? Andy Warhol, Jackson Pollock, Man Ray, Marcel Duchamp
6. The UK television series 'Blackadder the Third' is set during which historical period?
7. Which Karyn had a hit with "Romantic" in 1991? Blue, Red, White, Black
8. What is the name of the laboratory in New Jersey which is associated with Thomas Edison?
9. According to the Bible, Jesus was at a wedding in Cana when he turned water into what?
10. Ed and Dean Roland are members of which 1990s band? Smashing Pumpkins, Gin Blossoms, Collective Soul, Third Eye Blind
11. In which state was Andy Warhol born? Washington, Pennsylvania, Idaho, New York
12. What is the closest star to planet Earth?

13. What is the collarbone also known as? Deltoid, Scapula, Sternum, Clavicle
14. In the video for the Alicia Keys song "You Don't Know My Name" what job was Alicia Keys doing? Office Clerk, Driver, Air Stewardess, Waitress
15. Which type of racing is held at the Belle Vue Stadium in Manchester?
16. Abraham Slender is a character in which Shakespeare play?
17. Jenny Holzer hails from which US State? Ohio, California, Idaho, New York
18. Which four letter word beginning with B is the round knob of an antler next to a deer's head, and a prickly seed vessel?
19. The 'Duckworth-Lewis method' is used in which sport?
20. The Scottish village of Ullapool lies on which loch?
21. In June 1988, which British jockey was stripped of his OBE after he was jailed for tax evasion?
22. What body part is the title of Florence and the Machine's debut album, released in 2009?
23. Which artist said 'Everything you can imagine is real'?
24. What type of animal is a reedbuck?
25. Who was the father of English monarch Elizabeth I?
26. Which 1950s singer voiced Thomas O Malley in "The Aristocats"? Nat King Cole, Sammy Kaye, Phil Harris, Gene Autry
27. Fairy (or Little Blue) is the smallest species of which bird?
28. The lead character in Measure for Measure is the Duke of...? Venice, Vienna, Berlin, Rome
29. Viscus album is the Latin name for which parasitic plant?
30. Complete the title of an Elvis number 1 of the 1950s "Return to..."? Love, Mercy, Sender, You

31. Who wrote the poem 'The Lady of the Lake'?
32. Which of these ballets was not choreographed in the Romantic era? Pas de Quatre, La Sylphide, Les Sylphides, Giselle
33. Which of these periods of classical music came first? Renaissance, Romantic, Baroque, Classical
34. What is the airport code of Goa? GOI, GAI, GOA, GIA
35. 'Teardrop' by Massive Attack is the theme tune to which US television medical drama starring Hugh Laurie?
36. Which part of the body contains most of the digestive system? Chest, Abdomen, Brain, Heart
37. Elijah Wood voices Mumble in which animated movie? Ice Age, Home on the Range, Happy Feet, Treasure Planet
38. Who captained the England rugby union team in the 2011 World Cup in New Zealand?
39. Norma Jean and Memphis are leading characters in which animated movie? Home on the Range, Treasure Planet, Happy Feet, Ice Age
40. What is a line on a map called that connects two points which have the same average summer temperature?
41. Who composed the music for Raymonda (in ballet)? Paul Dukas, Anna Pavlova, Alexander Glazunov, Marius Petipa
42. What is the geographical first name of the lead singer of Weezer? Streams, Mountains, Rivers, Lakes
43. In heating appliances, what does BTU stand for?
44. "Danse Macabre" is a famous work by which composer? Purcell, Rimsky-Korsakov, Bizet, Saint Saens
45. On a mobile phone keypad, the letters 'abc' are on which number button?
46. Which of these is the name of a type of Apple? Founding, Discovery, Uncovering, Recovery
47. St. Valery is a variety of which vegetable? Broccoli, Carrot, Turnip, Potato

48. Julius Boros is the oldest winner of any Major Tournament. At what age did he win the USPGA in 1968? 48, 58, 78, 68
49. German Unity Day is celebrated in Germany during which month of the year?
50. What is the name of the wizarding pub in London in the Harry Potter novels?

ANSWERS: 1. Tzitzit; 2. Normandy; 3. Muscles; 4. Cook Islands; 5. Jackson Pollock; 6. British Regency; 7. White; 8. Menlo Park; 9. Wine; 10. Collective Soul; 11. Pennsylvania; 12. The Sun; 13. Clavicle; 14. Waitress; 15. Greyhound racing; 16. The Merry Wives of Windsor; 17. Ohio; 18. Burr; 19. Cricket; 20. Loch Broom; 21. Lester Piggott; 22. Lungs; 23. Pablo Picasso; 24. Antelope; 25. Henry VIII; 26. Phil Harris; 27. Penguin; 28. Vienna; 29. Mistletoe; 30. Sender; 31. Sir Walter Scott; 32. Les Sylphides; 33. Renaissance; 34. GOI; 35. House; 36. Abdomen; 37. Happy Feet; 38. Lewis Moody; 39. Happy Feet; 40. Isothere; 41. Alexander Glazunov; 42. Rivers; 43. British Thermal Unit; 44. Saint Saens; 45. 2; 46. Discovery; 47. Carrot; 48. 48; 49. October - 3rd; 50. The Leaky Cauldron

## Public Notices

### SWANS VETERINARY SERVICE

Morgans St, Ravensthorpe  
Tuesdays by Appointment  
Phone 9071 5777

### TO ADVERTISE IN YOUR LOCAL PAPER

contact Kylie on 0408 840 447 or email  
contributions@cospirit.net

#### Disclaimer:

1. No liability shall be incurred by Community Spirit by reason of any amendments to, or error or inaccuracy in, or the partial or total omission of an advertisement, or by reason of delay or default or from any other cause whatsoever.

If in the opinion of Community Spirit the error clearly reduces the value of the advertisement and the advertiser notifies it to Community Spirit within seven days of the publication date, then no charge will be made for the advertisement containing the error.

2. While the Compilers normally aim to publish all material submitted if space is available, Community Spirit reserves the right to refuse to publish or republish any contribution or advertisement without giving any reason.

3. No articles, letters or advertisements will be accepted which may appear to be defamatory or accusatory, or to favour one side in a legal dispute.

4. Community Spirit reserves the right to shorten or otherwise amend any contribution other than advertisements. Articles from a Not for Profit organisation regarding past events that thank sponsors within the body of the article, will be free of charge.





# LOOK LOCAL

Most email and web addresses on this page are hyperlinked.  
Just click on it on your smart device to contact the business.

In these troubled times, our local businesses need your support more than ever.  
**ALWAYS LOOK LOCAL FIRST!**

### AGRICULTURAL SUPPLIES

#### RAVENSTHORPE AGENCIES

**BERNIE & ROZ BIDDULPH**  
44 Morgans Street (PO Box 126)  
RAVENSTHORPE WA 6346  
PHONE: (08) 9838 1236  
FAX: (08) 9838 1206  
MOBILE: 0429 381 236  
EMAIL: ravyag@westnet.com.au



Fencing ▶ Batteries ▶ Oils & Lubricants ▶ Chemicals & Fertilisers  
▶ Water Pumps ▶ Water Tanks ▶ Water Pipe & Fittings  
▶ Dog & Cat Food ▶ Workwear & Boots AND HEAPS MORE!

### EARTH MOVING

#### GP&DR Belli Mini Earthworks

WE DO:

- Chain Trenching (Back Hoe attachment) • Slashing • Filling and leveling Pads • Post holes and footings with augers to 900mm Diameter,
- Rotary Hoeing • Retainer Walls • Site, Yard & Stockyard Clean Up
- Landscaping • Sand, Gravel & Loam Supplies • Tip Truck & Hiab Hire

For enquiries contact: Greg or Di   
**Mob: 0427 027 003**

### PAINTING



#### PAINTING

Reg. #4709  
Domestic, Commercial, Industrial, Town and Country  
Clean, Precise and Quality work.  
Local references available.  
For FREE Quotation and Booking  
Call Mick  
**0419 701 332**

### AUTOMOTIVE



Service, Spare Parts,  
Sales of Used + New Vehicles  
DL 18922 MRB 629

**Phone: 08 9071 0100**  
Cnr Norseman + Shelden Roads, Esperance

### FUNERAL SERVICES



Funeral Care & Monumental Agents  
www.dawsonsfuneral.com.au

120 Federal Street, Narrogin Tel: 9881 1161 support@dawsonsfuneral.com.au  
21 Richardson Street, Katanning Tel: 9821 1079 coventry@dawsonsfuneral.com.au

### SMASH REPAIRS

#### Albany Smash Repairs

Paul Armstrong  
Proprietor  
Tel 9842 2838  
Fax 9841 6131  
paularmstrong@smashrepairer.com



14 Prior Street, Albany WA 6330 • A/h 0418 936 010  
• All Makes & Models • All Work Guaranteed  
24 Hrs Towing

### BUSINESS NETWORKING



#### FITZGERALD BUSINESS NETWORK

Connecting & supporting businesses across the Fitzgerald Biosphere  
Join us!  
For events, local jobs and business directory visit  
www.fitzbn.com.au



### HAULAGE

#### HALLAMS CARTAGE CONTRACTORS

Specialising in:

- Water Cartage • Grain Carting
- General Freight • Wool Cartage
- Side Tippers • Gravel & Sand
- Roller Hire • Low Loader Hire

**Kevin Ph: 0429 049 114**  
email: hallamscartage1@bigpond.com

### TYRES



WE STOCK AND REPAIR A WIDE RANGE OF TYRES AND BATTERIES  
Contact Riaan for all your Tyre and Battery needs on **0474 143 691**  
85 Tamar Street, Hopetoun WA 6348  
hopeytyreservices@gmail.com  
ABN: 70 681 573 176 – Licence Numbers: MRB8814 & MR17261

### EARTHWORKS

#### HOPETOUN EARTHWORKS

- Earthworks • Trenching • Siteworks
- Clearing • Septic • Bobcat & Backhoe Hire

**Ph: 9838 3336**  
Fax: 9838 3360 Mobile: 0427 383 336  
Supply & Laying Ready Mixed Concrete

### MESSAGE

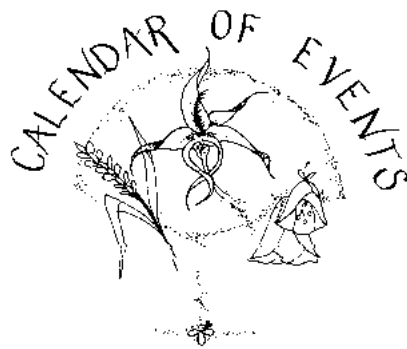
#### AS SMART



Remedial and Relaxation Massage  
(Remedial Therapy is claimable)  
Member of AMT  
Specialist Techniques in Pain Management  
For all muscular aches and pains  
LET OUR EXPERIENCE WORK FOR YOU!  
**0428 422 368**  
By appointment only  
www.smartremedialmassage.com.au  
15 Frearson Street Esperance

# LOCAL ADVERTISING

The Community Spirit is your local newspaper, with local news and local advertising.  
Target your local customers through the Community Spirit, supporting the local community.  
Please don't hesitate to contact Kylie at [contributions@cospirit.net](mailto:contributions@cospirit.net)



## REGULAR EVENTS

### UPCOMING EVENTS

#### October

- 11 MHFA Training—Conversations About Suicide, 9am-1pm, Hopetoun CRC
- 11 Business Local: Hashtag Workshop, 4.30-5.30pm, Ravensthorpe CRC
- 12 Understanding Meditation Workshop, 5.30-7.30pm, Ravensthorpe CRC
- 13 Business Local: Optimise Your Workspace, 1-2pm, Ravensthorpe CRC or online via Zoom
- 13 Mama Stitch, 6-9pm
- 14 2023 Referendum
- 14 African Drums Training! 9am-3pm, CRC/ Multipurpose Room
- 14 Muma Stitch, 6-9pm
- 15 African Drum Training, 9am-3pm, CRC/ Multipurpose Room
- 16-17 Camp Quality wesCarpade
- 16-22 Get Online Week!
- 16 Get Online Week: Ka-Bingo! 1-2.30pm, Ravensthorpe CRC
- 17 Ravensthorpe Shire Ordinary Council Meeting, 6-7pm, Hopetoun Council Chambers
- 18 Carers WA: Pop-Up, 10am-12pm, Ravensthorpe CRC
- 18 NBN Fibre Information Session, 3-6pm, Ravensthorpe CRC
- 19 Join Mable and Ravy CRC to hear about Staying in Place, 11am-12.30pm, Ravensthorpe CRC
- 19 Hopetoun Staying in Place Community Info Session, 3-4.30pm, Hopetoun CRC
- 19 Hopetoun CRC AGM, 6.30-7.30pm, Hopetoun CRC
- 20 Mama Stitch, 6-9pm
- 21 Local Government Elections
- 23 Business Local: Digital Spring Clean, 9-10am, Ravensthorpe CRC
- 23 Community Spirit Deadline 5pm
- 26 Men's Chat Circle, 6-7pm, Ravensthorpe CRC
- 26 Sumalee's Thai Cooking Class, 6-8pm, Hopetoun CRC
- 28 Community FQM Ambrose Golf Day, Hopetoun Everett Country Golf Club

For contributions to the Calendar of Events email the details to [contributions@cospirit.net](mailto:contributions@cospirit.net)

### CHURCH NOTICES

#### ANGLICAN CHURCH

St Andrews Ravensthorpe service on the first and third Sunday of the month at 11am.  
Peter the Fisherman, Hopetoun service every Sunday at 9am followed by morning tea.  
Enquiries Kevin and Lyn Hosking, 9838 3130.

#### HOPETOUN

**ARTITUDE VOCALS** 3pm Mon (Vocals), Tues (Visual Arts), during term. ages 4+, Hopetoun Art Shed, Tamar St, [www.raveaboutarts.com](http://www.raveaboutarts.com)

**ARTITUDE JUST DANCE** 3pm Wed during term, ages 2+, Hopetoun Community Centre. [www.raveaboutarts.com](http://www.raveaboutarts.com)

**ARTITUDE VISUAL ARTS** 3pm Tuesday during term. Details & bookings [www.raveaboutarts.com](http://www.raveaboutarts.com)

**BOOTSCOTING & LINEDANCING** Fri 1.30pm Mary Ann Haven Centre

**BOWLS** Wed Mixed Scroungers 1pm, Fri 4pm rollup & fun, Socaill Bowls 1pm Sundays, Hopetoun Bowling Club. Ph Lance 0428 383 152.

**CLUB MERLOT** 7pm second Friday of the month, Hopetoun Shire Hall. Ph Sue 0407 981 301

**CONTAINERS FOR CHANGE** at Hopetoun Men in Sheds, 86 Tamar Street, Hopetoun. Open Tuesdays & Thursdays 8.30am-12pm and 1-3pm and Saturdays 8.30am-12pm.

**COMMUNITY NURSE** Wed 9am-4pm, Fri 8am-4pm, Mary Ann Haven Centre

**CRAFT** Wednesdays from 1pm at Mary Ann Haven, all welcome.  
**CRC, Library & Visitor Centre** Open Monday to Friday 9am to 4pm. Committee Meetings bi-monthly, ask at CRC.

**CWA** 2nd Monday 1.30pm at Centre

**CWA SHOP** Saturdays 8.30 to 11.30. Library, secondhand goods, plants, fresh vegetables, fruit, eggs, cakes and pies, honey, jams, and relishes.

**FIRE BRIGADE TRAINING** First Sunday of each month from 15:00 to 18:00 unless the Sunday falls on a public holiday then it will be the 2nd Sunday at Emergency Services Building, Veal St Hopetoun.

**GOLF** Saturday Ladies and Men's Golf 18 holes - Winter season names in by 11.30 Tee Off 12 noon, - Summer Season names in by 12 noon Tee Off 12.30. Thursday Scroungers Ladies and Men's Golf 9 or 12 holes depending on the weather, names in by 1.15 Tee Off 1.30. Visitors and Learners are always welcome.

**HOPETOUN CLAY TARGET CLUB** Monthly shoot on Sundays 10am start

**HACC HEALTH SERVICE** Day Centre Program, Tuesdays, alternating weekly between Hopetoun and Ravensthorpe. Contact HACC for details.

**HOPETOUN LOCAL MARKETS** first Sunday of each month. Ray White Real Estate outside area at 9am to 1pm. Please contact Robyn Cockram 0429 925 569 or [cockram36@gmail.com](mailto:cockram36@gmail.com) for more details.

**HOPETOUN PLAYGROUP** Fridays 9.30-11.30am Location changes contact via [facebook.com/hopeyplaygroup](http://facebook.com/hopeyplaygroup).

**HOPETOUN PROGRESS ASSOCIATION** Office open Tuesday and Thursday 9am - 12pm.. Please call 9838 3363 anytime to leave us a message or email [hprogress@westnet.com.au](mailto:hprogress@westnet.com.au)

**HOPEY STUDY CLUB** 2.45pm each Monday of school term.

**LINE DANCING** 1-3pm, Wednesdays, Mary Ann Haven Centre, Ph 9838 3378 Trix.

**LITTLE BEAT-BOP** Hopetoun Community Centre, rear foyer, Mondays 9.15-9.45am, for School Term. Registrations required. Tel 9838 3062 or [www.hopetounwa.com](http://www.hopetounwa.com)

**MACHINING GROUP** Thursdays phone Val 9838 3176

**MEN IN SHEDS** Tamar St Tues 9am-3pm, Thurs 8.30am-12, 1-3pm and Sat 9am-12pm. All men welcome contact Daryl 0428 442 517.

**MENS STAY ON YOUR FEET** Tues & Thurs 9am-10am at Mens Shed. Ph Greg 0458 524 516 or Daryl 0428 442 517.

**OLD BASTARDS CLUB** 12pm Fri, Gibson St, Hopetoun  
**PILATES** Mon at 5.30pm (Maitland St Studio), Mon 6.30pm or Wed 8.30am, Hopetoun Community Centre. Contact Alison from MobiFit 0407 779 562.

**PLAYGROUP** 9.30-11.30am

**POOL COMPETITION/DARTS** Wednesdays 7.30pm Port Hotel.

**POOL COMPETITION** Wednesday 7pm Wavecrest Bar and Bistro.

**QUALUP CHOIR** Times vary, Hopetoun Seniors Centre. Phone 0447 385 049

**RHYME TIME** Every Thursday 9.15am (except school and public holidays) at Hopetoun Public Library (inside Hopetoun CRC). Free stories, songs and Rhymes for children under 2.

**SEA SEARCH AND RESCUE** Monthly training at Emergency Services Building, as indicated by regular signage on Veal St.

**SENIOR CITIZENS** Thursday 1.30pm. Meetings 1st Thursday every second month from June, 10 am at Mary Ann Haven.

**SOCIAL TABLE TENNIS** Fortnightly Mondays, 4-6pm, Hopetoun Community Centre

**SOCIAL NETBALL** 6.30pm, Hopetoun netball courts. Maddi 0487 458 174.

**SOUTHERN SCRIBES** Fourth Saturday 1pm, phone 9838 3472.

**STAY ON YOUR FEET** Fridays 9am-10am Mary Ann Haven.

**STORYTIME** Every Monday 10am (except school and public holidays) at Hopetoun Public Library (inside Hopetoun CRC) Free stories, songs, rhymes and craft. Suitable 0-5y.

**TABLE TENNIS TOURNAMENT** Last Monday of the month, 4-6pm, Hopetoun Community Centre

**TAI CHI** Wed 10am, Hopetoun Community Centre Ph Alison 0407 779 562

**YARN WITH HOPE** Free individual counselling sessions 12-2pm, first Wed of every month. Hopetoun CRC

**YOGA** Hopetoun Progress Assoc Are running weekly yoga classes starting on July 29th. For more information call Rachael on 0401 272 585.

**YOUTH SPACE** 4-6pm, Wednesday, Hopetoun CRC, High School students only, Ph 9838 3062.

**YARN WITH HOPE** 12-2pm, first Wed of every month, Hopetoun CRC

**VOLUNTEER AMBULANCE SERVICES** Fortnightly training 7pm Thurs, Emergency Services Building. Wendy 0428 133 498.

#### MUNGLINUP

**GOLF** Ladies Golf: Wednesday by 8.45am Men's Golf: Saturdays by 11.30am.

#### RAVENSTHORPE

**GOLF** April- October Ladies Golf: Wednesday names in by 9am Men's Golf: Saturday names in by 12pm

**GYM** membership available. Contact Ravensthorpe Shire 9839 0000.

**HAND GUN CLUB** Every second Sunday 9am Contact Bill Auburn 0429 383 120.

**HOSPITAL AUXILIARY** meets every second month on the second Tuesday in the Red Room of the RCC. Contact person, Rae Guest on 0429 380 045.

**MUSEUM/INFORMATION CENTRE** Open 10 am to 4 pm Monday to Friday or by appointment 9838 1583.

**OP SHOP** trading 10am to 1pm Tuesdays to Saturdays.

**RAVENSTHORPE BASKETBALL** For more information contact Ethan Clarke 0452 261 717.

**RAVENSTHORPE BOWLING CLUB** Every Saturday from September-May. Both men and women—names in at bowling club by 12.45pm. We are a small social club with new and visiting members especially welcome. We can supply bowls if needed. Contact 0429 146 315 for more info.

**RAVENSTHORPE PLAYGROUP AND MOTHERS' GROUP** Wednesday from 10am during school term, at RDHS, Hosking St. Please bring a piece of fruit to share.

**STATE EMERGENCY SERVICE** meets at 7.30 pm on second and fourth Wednesday of month at SES HQ, Morgan St.

**STAY ON YOUR FEET EXERCISES** exercises at Ravensthorpe Cultural Centre, Fridays 10-11am. New members welcome.

**COMMUNITY RESOURCE CENTRE & LIBRARY** Open all day from 9am-4pm Monday to Friday.

**TAI CHI** every Wednesday morning 9.30-10.30am at the Ravensthorpe Cultural Centre. Contact Jessie Fairhead 0427 718 803.

If you know of any changes that are required to REGULAR EVENTS, please ensure you notify us at [contributions@cospirit.net](mailto:contributions@cospirit.net)

#### CATHOLIC CHURCH

Saturday before 1st Sun of the Month Hopetoun 6pm  
Saturday before 3rd Sun of the month Hopetoun 6pm  
1st Sunday, Ravensthorpe, 8.30am  
3rd Sunday, Ravensthorpe, 8.30 am  
For enquiries please call Fr A Chukwu 0470 439 768.



# BUSINESS AND SERVICES DIRECTORY

## EMERGENCY NUMBERS

EMERGENCY TO REACH ALL SERVICES..... 000

## ALBANY

Albany Smash Repairs.....9842 2838 • paularmstrong@smashrepairer.com  
www.smashrepairs.com.au  
Smith's Aluminium .....9842 2617 • sales@smithsaluminiumand4wd.com.au

## DOCTOR'S SURGERY

Livingston Medical  
Hopetoun—Mon, Wed, Fri 9am-5pm.....9838 3854 • F 9838 3729  
Ravensthorpe—Tues, Thurs 9am-5pm ..... 9838 1600  
Community Transport Service Co-ordinator..... 0439 335 147

## ESPERANCE

ARC Accounting ..... 9071 5833 • admin@arcaccounting.com.au  
AS Smart Remedial & Relaxation Massage Peter Dempster ..... 0428 422 368  
Saturday morning appointments available • www.smartremedialmassage.com  
Compass Conveyancing (WA).....9071 1655 • meredith@espconvey.com.au  
Esperance Bay Dental ..... 9071 5888 • www.esperancebaydental.com.au  
EMG Ford ..... 9071 0100 • accounts@emgesperance.com.au  
Esperance Toyota ..... 9071 0100 • accounts@emgesperance.com.au  
Powerplant Motorcycles ..... 9071 1780 • tim@powerplantmc.com.au  
www.powerplantmotorcycles.com.au  
Sportspower - Greg Bower ..... 9071 2365 • M 0402 124 681  
esperance@sportspower.com.au  
Swan's Veterinary Services ..... 9071 5777

## HOPETOUN

Belli Mini Earthworks ....Ph 9838 3898 • M 0427 027 003 • diannegreg@wn.com.au  
Carpet Cleaning ..... 0408 597 017  
Hallams Cartage Contractors ....M 0429 049 114 • hallamscartage1@bigpond.com  
Hopetoun Beachfront Chemist ..... 9838 3333 • hopetouchemist@gmail.com  
Hopetoun Community Resource Centre ..... 9838 3062 • crc@hopetounwa.com  
Hopetoun Earthworks & Concrete Supply ..... 9838 3336 • 0427 383 336  
Hopetoun General Store ..... 9838 3052 • russ.asty@bigpond.com  
Hopetoun IGA ..... 9838 3919 • russ.asty@bigpond.com  
Hopetoun Slashing ..... 0429 049 114  
Hopetoun Transport and Haulage ..... 0429 049 114  
Hopetoun Tyres & Batteries ..... 9838 3537 • M 0474 143 691  
hopeytyreservices@gmail.com  
LJ Hooker....0408 030 888 • rmliloski.hopetoun@ljhooker.com.au - @Robert Miloskeski  
Pest Control Local & Termites ..... 0429 801 295 • casperprince@bigpond.com  
Port Hotel ..... 9838 3053 • F 9838 3036 • Kitchen 9838 3375  
www.porthotel.com.au  
Ray White Rural South Coast WA ..... 9838 3100 • F 9838 3250 • M 0429 299 797  
raywhiteruralsouthcoastwa.com.au  
Wavecrest Bar & Bistro ..... 9838 3400 • venuemanager@wavecrest.net.au  
Wavecrest Village ..... 9838 3888 • village@wavecrest.net.au

## JERRAMUNGUP

Jerramungup Electrical Service ..... M 0428 351 171 • jmpelectrical@bigpond.com

## LAKE KING

Lake King Tavern, Motel & Caravan Park ..... 9874 4048  
lakekingtavern@gmail.com • www.lakekingtavernmotel.com.au  
Nutrien Ag Solutions—Ross ..... 9874 4004 • F 9874 4005 • M 0428 105 059

## RAVENSTHORPE

4 Rivers Plumbing Gas & Civil Contracting ..... 0407 358 983 • 9838 1725  
admin@4riversplumbing.com.au  
Dingo's Dog Kennels ..... M 0427 381 092  
Eremia Camel Treks - Museum Writer Retreat, Accommodation.... M 0427 381 092  
animamundi@westnet.com.au  
Freight Lines General - Murray ..... 9838 1343 • F 9838 1382 • M 0427 381 211  
Hannaford Seed Grading ....M 0427 268 136 • hannaford.ravensthorpe@gmail.com  
Keen's Mini Mart ..... Tony 0456 468 499  
Email: keensminimart@gmail.com  
Madden Rural ..... Jordan 0428 542 428 • Mick 0429 380 081 • Steve 0428 380 081  
admin@maddenrural.com  
Palace Motor Hotel ..... 9838 1005 • palacehotelravensthorpe@gmail.com  
R & L Construction ..... 9838 3888 • M 0428 381 232  
R and R Heavy Diesel Services ..... M 0438 164 616 • randrhds@bigpond.com  
Ravensthorpe Agencies - B&R Biddulph ..... 9838 1236 • ravyag@westnet.com.au  
Ravensthorpe Agricultural Initiative Network ..... 9838 1018 • M 0417 174 299  
Ravensthorpe Building Supplies .. 9838 1100 • ravybuildingsupplies@outlook.com  
Ravensthorpe Community Resource Centre ..... 9838 1340  
ravensthorpe@crc.net.au  
RavMech ..... 9838 1146 • M 0499 196 024  
info@ravmech.com  
Ravensthorpe Pharmacy ..... 9838 1020 • ravensthorpepharmacy@gmail.com  
Nutrien Ag Solutions ..... 9838 1081  
kyle.forsyth@nutrien.com.au • M 0417 912 318  
tom.major@nutrien.com.au • M 0403 782 887  
Yummylicious Candy Shack 89 Morgans St, Ravensthorpe .....Ph: 08 9838 1647  
belinda4444@hotmail.com

## NON-EMERGENCY NUMBERS

Ambulance NON-Emergency ..... 131 233  
Hopetoun Volunteer Marine & Rescue ..... 9838 3207  
Lake Grace Hospital ..... 9890 2222  
Police ..... 131 444  
(At request this number is the contact number for all Police Stations)  
Hopetoun Police Station ..... 9867 9120  
Ravensthorpe Hospital ..... 9838 2211  
State Emergency Service ..... 132 500

All email and web addresses on this page are hyperlinked. Just click on it on your smart device.

# Opening day for Bowls



■ Opening day players.



**Peter Rundle** MLA  
Member for Roe

107 Dempster St  
Esperance  
WA 6450  
(08) 9071 6555

 [peter.rundle@mp.wa.gov.au](mailto:peter.rundle@mp.wa.gov.au)  
 [www.peterrundle.com.au](http://www.peterrundle.com.au)  
 [facebook.com/PeterRundleRoe](https://facebook.com/PeterRundleRoe)

## ■ Hopetoun Bowls

The opening of the new season was on Sunday October 1st with 36 players participating with members and new bowlers having a fun afternoon sponsored by Michelle Tancred of Shipwrecked Bakery playing two games of fours an hour on the clock changing partners each game.

Winning both games were Donna Carter +6, Alec Woods, Russell Stephen, and Sahra +9, Bill Pike +11, running 3rd with +14 Bub McGlinn and the winners with +16 were Mary Kornaus and Val Metz.

We ended the afternoon with a hamburger tea cooked by Terry Lord and Alec Woods. Thank you for the afternoon tea organised by Donna Carter.

Mixed Scroungers October 4th with 19 players, sponsored by Margot Hawkins. Rink winners Lance Goddard, Bub McGlinn, Blue Klingberg, Donna Carter, Michelle Stevens, and Bob Suenis with the winners being Bob and Blue.

The Pennant Season has already started with the Men playing against Condingup 1 at Esperance.

Des Barr's team beating Ted Young's team 21-18, and Terry Lord's team losing to Jayson Feigert's team 7-30 Hopetoun 28, 1pt Condingup 48, 4pts.

The Ladies played against Esperance at Condingup. Coral Grant's team beating Elaine Rule's team 38-14; and Sue Lee's team losing to Marilyn Jackson's team 10-25. Hopetoun 48, 4pts; Esperance 39, 1pt.